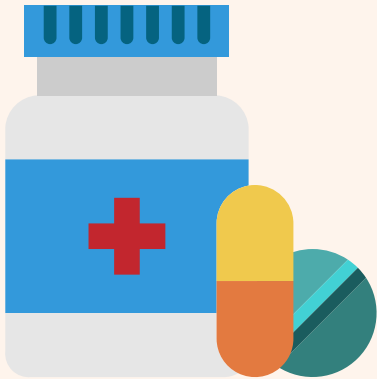


Reference Guide for Carers and Support Workers of Clozapine Patients

CLOZAPINE



- + Clozapine is an antipsychotic medication that is used for the treatment of Schizophrenia. Clozapine is highly effective at controlling the symptoms of the illness; however, it must be closely monitored due to potentially harmful side effects.
- + Whilst taking clozapine, **the resident must have a blood test and be seen by a doctor every 28 days.**
- + Some patients may need to be monitored on a more frequent basis.
- + A blood test is required prior to attending the doctor's appointment. The blood test cannot have occurred longer than 48 hours from the doctor's appointment
- + Medication is dispensed to the community pharmacy every 28 days after the doctor has seen the resident
- + The prescription for clozapine cannot be written until the blood test results are known.
- + Clozapine needs to be taken on a **DAILY BASIS**. Clozapine doses must not be missed. If a dose is missed for any reason, please contact the below immediately:

Clozapine Clinic (Business Hours): (07) 3317 1070

After Hours Hotline: 1300 64 22 55



OTHER HELPFUL INFORMATION

- + The blood test required for clozapine consumers is a Full Blood Count (FBC or CBC).
- + If the resident has any change to their smoking habits, it is vital that a clozapine coordinator be contacted immediately. Starting or stopping smoking can significantly change clozapine levels.
- + Caffeine can also increase clozapine levels. This includes energy drinks.
- + If the resident is presented or admitted to hospital, please advise the hospital that the patient is taking clozapine. Also please contact one of the clozapine coordinators as soon as possible.
- + An illness such as a cold or mild infection does not preclude the resident from having a blood test.

Clozapine Team (07) 3317 1070