

ACCU-CHEK® Performa



ⓔⓃ

Start Here

Quick Start Guide

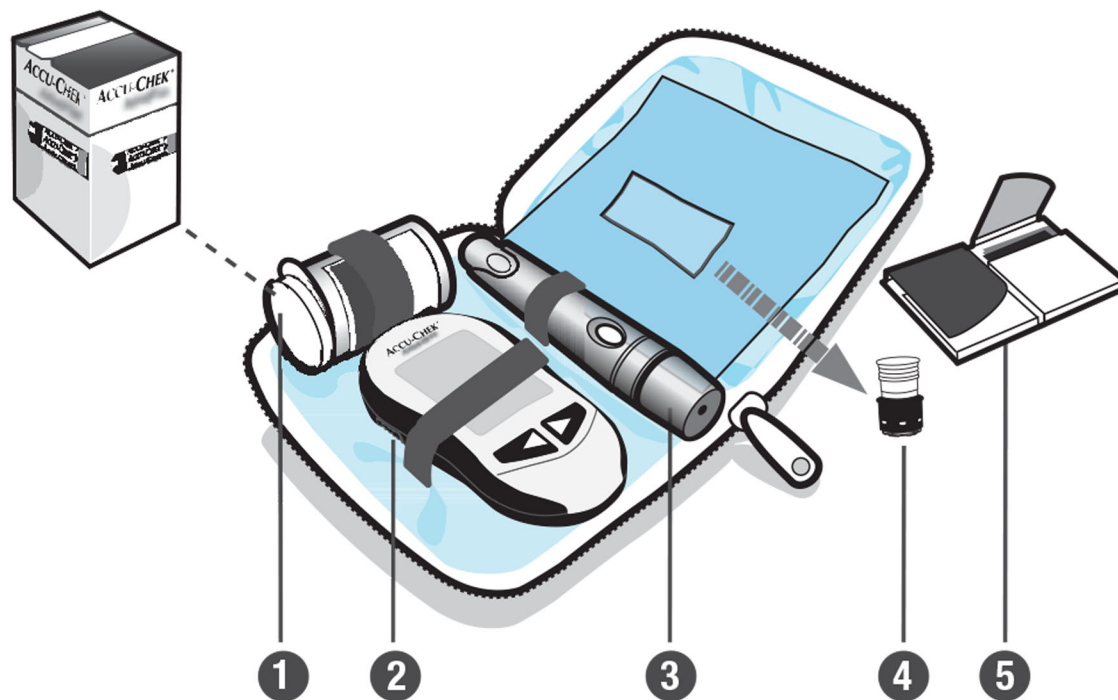


WARNING

This Quick Start Guide does not replace the Owner's Booklet for your Accu-Chek Performa blood glucose meter. The Owner's Booklet contains important handling instructions and additional information.

ACCU-CHEK®

Contents



- 1 Test Strip Container
- 2 Accu-Chek Performa Meter with Pre-Inserted Activation Chip
- 3 Accu-Chek Multiclix Lancing Device
- 4 Lancet Drum – contains 6 lancets
- 5 Owner's Booklet

 **WARNING**

The lancing device is intended for personal use only.

No Meter Preparation Necessary

Your meter is already coded and comes with a pre-inserted **black** activation chip that you never need to change. Even if you use test strips from test strip boxes that contain another activation chip that is a different color or has different numbers, you never need to change the **black** activation chip again.



Activation
Chip Slot with
Pre-Inserted
Activation Chip



Pre-Inserted
Activation
Chip

Back View of Meter

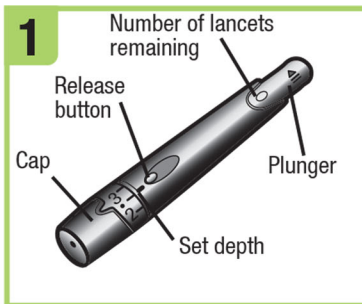
Side View of Meter



NOTE

If you open a test strip box and find an extra activation chip, simply discard it.

Setting up the Lancing Device



1 Familiarise yourself with the Accu-Chek Multiclix lancing device.



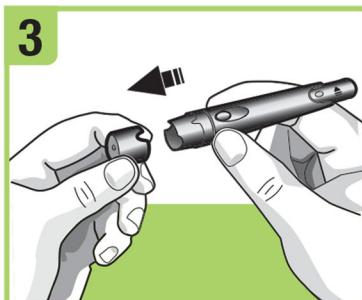
2 Get the lancet drum from the pocket in the carry case.

1 Lancet Drum = 6 Lancets

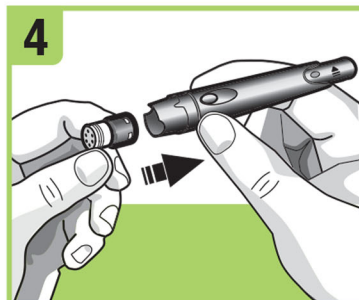


NOTE

Each lancet drum contains 6 sterile lancets.



3 Remove the cap by pulling it straight off. Do not twist the cap.

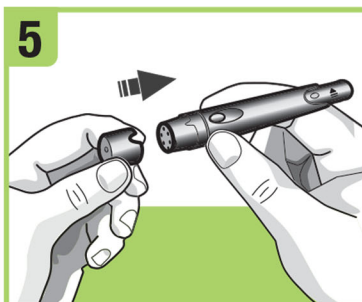


4 Insert the lancet drum, blue ring first, into the lancing device. Push the drum all the way in until it clicks firmly into place.



NOTE

Do not remove the lancet drum until all 6 lancets are used since the drum cannot be reused once it has been removed from the lancing device.



5 Replace the cap on the lancing device. Make sure the notch on the cap lines up with the notch on the device.



6 Adjust the lancet depth to a comfortable penetration level. Start at 2. For tougher skin, dial to a higher number.



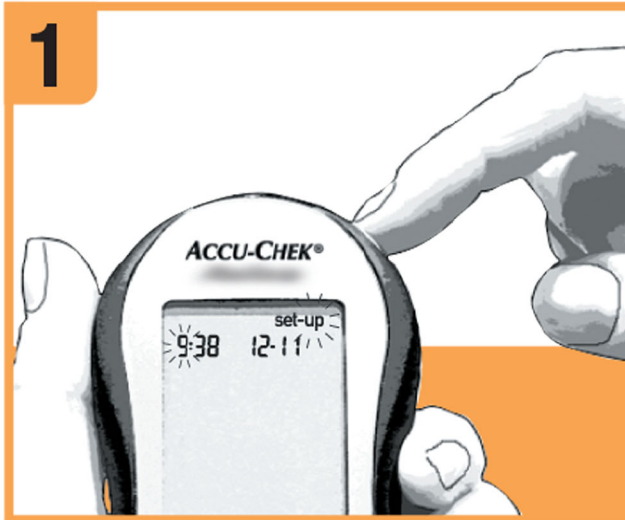
7 Press the plunger in as far as it will go, like a pen. The release button turns yellow when the device is ready.



Set the lancing device aside until you are ready to perform a fingerstick.

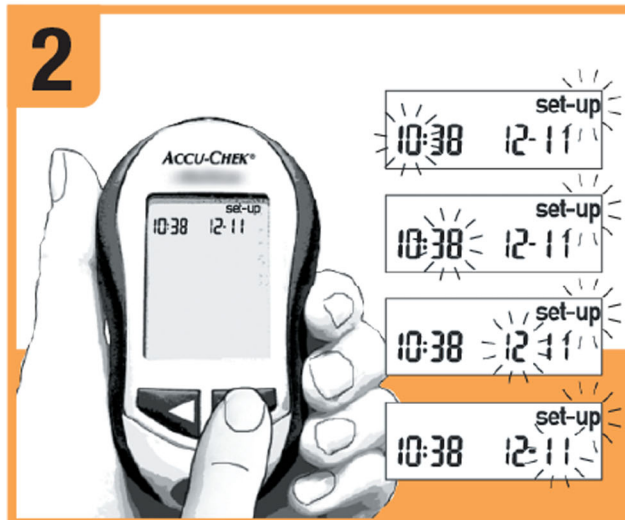
Setting the Time and Date on the Meter






1



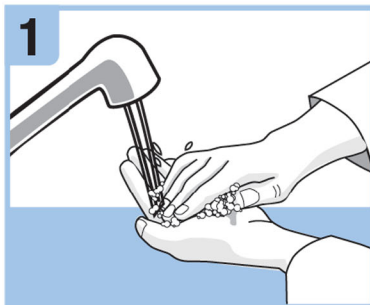
Press and release . The meter beeps and **set-up** and the hour flash on the display.

2

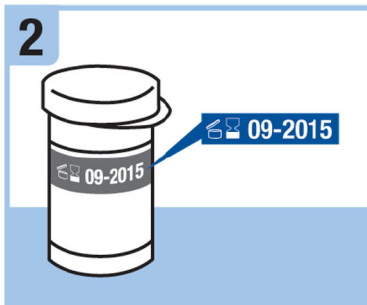


Use  or  to adjust the hour. Press and release  to advance through the hour, minutes, day, month, and year, adjusting each flashing setting as needed with  or .

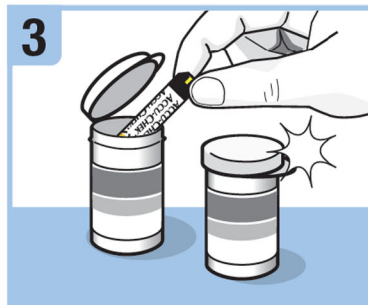
Performing a Blood Glucose Test



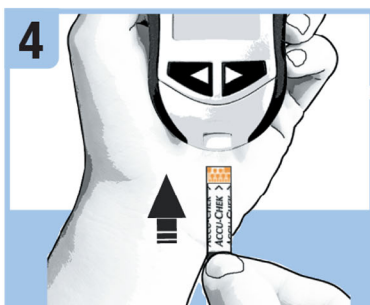
1 Wash and dry your hands before you perform a blood glucose test.



2 Check the use by date on the test strip container. Do not use test strips past the use by date.



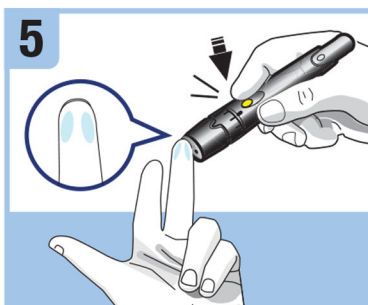
3 Remove a test strip from the test strip container. Close the cap tightly.



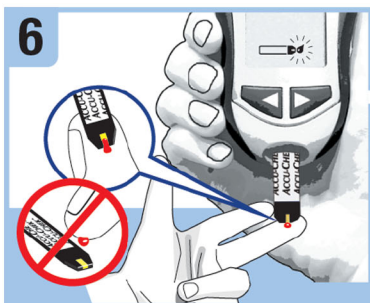
4 Insert the test strip into the meter in the direction of the arrows until the meter beeps.



The activation number appears briefly, the meter beeps, and a flashing blood drop symbol appears.




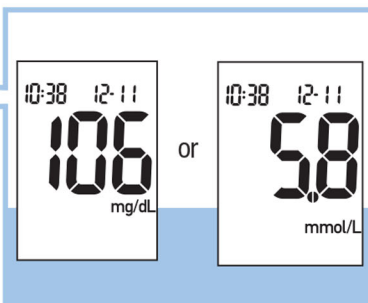
5 Hold the lancing device firmly against the edge of your fingertip and press the yellow release button to prick your finger.



6 Touch the end of the test strip to the blood drop. Do not put blood on top of the test strip.



The meter beeps and  flashes when there is enough blood in the test strip.



The test result appears on the display after 5 seconds.

Before you finish...



Prepare the lancing device for the next test. Twist the plunger one-quarter turn forward, then back all the way to advance to the next lancet. The window shows the number of lancets remaining.

Error Messages

If any of the error messages below appear on the display at any time, refer immediately to the Owner's Booklet, Chapter 5, Display and Error Messages.

E-1 The test strip may be damaged or not properly inserted. Remove and reinsert the test strip or replace it if damaged.

E-2 The activation chip is incorrect. Turn the meter off and insert a new activation chip. If you need an activation chip, contact Roche.

E-3 Your blood glucose may be extremely high or a meter or a test strip error has occurred. If your test result matches how you feel, contact your healthcare professional immediately. If your test result does not match how you feel, repeat the blood glucose test and see the Owner's Booklet, Chapter 2, Unusual Blood Glucose Results. If the second test result does not match how you feel, perform a control test with the control solution and a new test strip. If the control result is within the acceptable range, review the proper testing procedure and repeat the blood glucose test with a new test strip. If the E-3 code still appears for your blood glucose test, your blood glucose result may be extremely high and above the system's reading range. **Contact your healthcare professional immediately.** If the control result is not within the acceptable range, see the Owner's Booklet, Chapter 4, Understanding Out-of-Range Control Results.

E-4 Not enough blood or control solution was drawn into the test strip for measurement or was applied after the test had started. Discard the test strip and repeat the test.

E-5 This message may appear when using a white activation chip in the meter. It means the white activation chip is from an expired lot of test strips. Turn the meter off and insert a black activation chip. Make sure the time and date in the meter are correct.

E-6 Blood or control solution was applied to the test strip before the flashing drop symbol appeared on the display. Discard the test strip and repeat the test.

E-7 An electronic error occurred or, in rare cases, a used test strip was removed and reinserted. Turn the meter off and on, or take the battery out for 20 seconds and reinsert it. Perform a blood glucose or control test.

E-8 The temperature is above or below the proper range for the system. Refer to the test strip package insert for system operating conditions. Move to an area with the appropriate conditions, wait 5 minutes, and repeat the blood glucose or control test. Do not artificially heat or cool the meter.


E-9 The battery is almost out of power. Change the battery now. If the message reappears after the battery has been replaced, reset the meter. To reset the meter, remove the battery, press any meter button, then reinsert the battery.

E-10 The time and date settings may be incorrect. Make sure the time and date are correct and adjust, if necessary.

NOTE

Contact Roche if the error message continues.

LAST UPDATE: 2012-05

 Roche Diagnostics GmbH
Sandhofer Strasse 116
68305 Mannheim, Germany
www.accu-check.com

 0088

ACCU-CHEK, ACCU-CHEK PERFORMA, and ACCU-CHEK MULTICLIX are trademarks of Roche.

©2012 Roche Diagnostics
0687360001-0912

